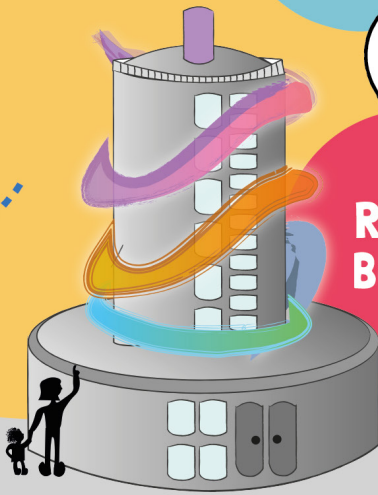


2

Redcar
Beacon



Esplanade

1

Zetland
Lifeboat
Museum



REDCAR SEAFRONT

Walk and Talk Trail



Distance: 1 mile

Time to complete trail: 30 minutes

Stopping points:

1. Zetland Lifeboat Museum
2. Redcar Beacon
3. Redcar Bandstand
4. Coatham Boating Lake
5. Coatham Green

Take a walk along the Redcar coast and answer the questions in this booklet as you go! Look out for interesting pavement art and sculptures along the way and talk about these with your child.

Once you have completed the trail, send a photo of your answers to cs.competitions@literacytrust.org.uk to be entered into a prize draw!

Top tips for families

Walk and talk

Chat with your child about what you see on the trail.

Ask open-ended questions so that the answer is not just a yes or a no.

Introduce new words into the conversation.

When you use a new word, explain what it means. If your child is interested, encourage them to do some research about the word when they get home.

Talk about the day on your way home

Ask your child which part of the trail they enjoyed the most and what their favourite new word is.

This trail is brought to you by the National Literacy Trust's Read North East and the Connecting Stories campaign, funded by Arts Council England.



Zetland Lifeboat Museum

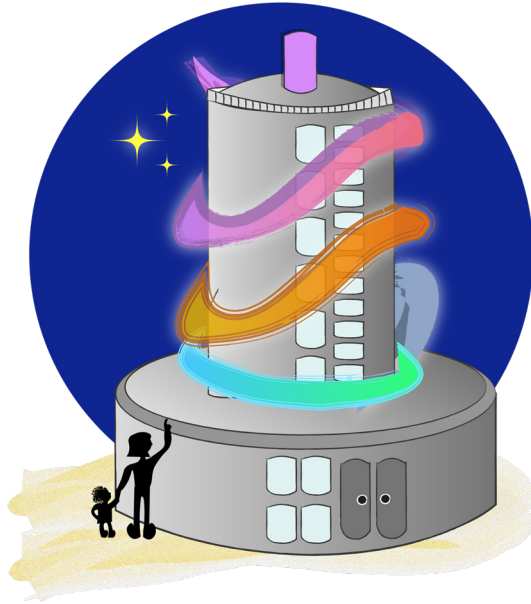
The Zetland Lifeboat Museum is home to the oldest lifeboat in the world! By looking at the front of the museum, can you see when the building was built?

Hint

Some old buildings have the date that they were built carved into stone on the wall.



Answer = 1877



Redcar Beacon

The Redcar Beacon is covered in different strips of lights. But, it is still a colourful building when the lights are off! List all of the different colours that you can see on the Redcar Beacon in the space below:

?

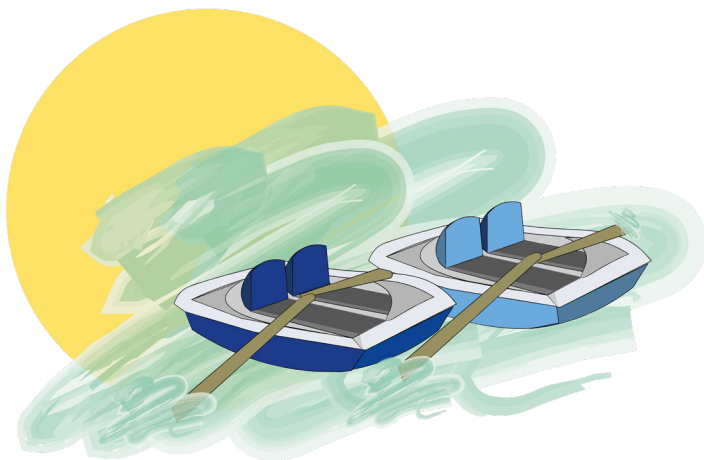


Redcar Bandstand

Stand in the Redcar Bandstand and look back the way you have walked, what type of birds can you see?

?

Answer = Penguins



Coatham Boating Lake

At the site of the boating lake, turn around and look out to sea. How many wind turbines do you think are in the water?

A 27

B 50

C 15



Coatham Green



Cross the road past the carpark to reach Coatham Green; this big, open, green space is home to lots of plants and creatures!

Can you name a plant or animal species that you might see on Coatham Green?

?



4

Coatham
Boating
Lake

3

Redcar
Bandstand

5

Coatham
Green

