



Wythenshawe Discovery
Walk and Talk Trail

Let's take a walk through Wythenshawe Town Centre!

Use the map to follow the trail. When you have completed the questions below, take this sheet to Wythenshawe Forum Library, where you'll be able to swap it for a free book! Make sure you check manchester.gov.uk/libraries for the most up-to-date opening hours.

The trail takes less than thirty minutes to complete.
Don't forget to share your photos of the trail on social media! You can tag us on Facebook **@ReadManchester**
@NationalLiteracyTrust and **@manclibraries** or on Twitter **@Literacy_Trust** **@manclibraries**. Make sure to use the hashtags **#ConnectingStories** **#ReadMCR**

Top tips for families

Chat with your child about what you see on the trail
Ask open-ended questions to avoid "yes" or "no" answers and stimulate conversation. Introduce new words into the conversation
When you use a new word, explain what it means. If your child is interested, encourage them to do some research about the word when they get home. Talk about the day on your way home
Ask your child which part of the trail they enjoyed the most and what their favourite new word is.



Scan for directions.

*Connecting
Stories*



ARTS COUNCIL
ENGLAND



Start at the play area at Kirkup Gardens, opposite Manchester Enterprise Academy on Simonsway.

What play equipment can you see?

.....

What one is your favourite?

.....

Next you will see the sports court.



Which legendary Manchester United player grew up here in Wythenshawe?

M_____ **R**_____



Keep walking and you will see some very tall trees on the other side of the park, to your right. This is a Lombardy Poplar tree.

Did you know that this species of tree can grow up to six feet a year? How many Lombardy Poplar trees are there in the park?



As you leave the park, make sure you cross the road safely to get to the Police Station.



What picture icon showing something you can wear can you see on the Police Station sign?

Take a left towards Wythenshawe Forum.

Draw the logo that you see underneath this sign.



Go into Wythenshawe Forum.

How many metres long is the swimming pool at Forum Leisure?



Find out how you can get involved in the Summer Reading Challenge at Forum Library!

What is this year's theme?

.....



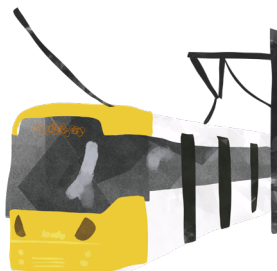
As you walk outside, you will see a statue of a Manchester bee on your right!

What colours are the flowers that the bee is standing on?

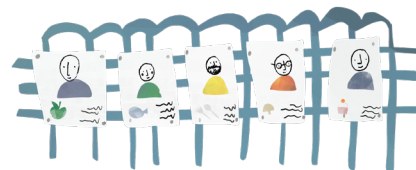
.....

Walk to the Metrolink.

Name three places you can visit that are just one stop away.



...../...../.....



Next to the tram stop you will see a display of posters from Real Eat Wythenshawe.

Take a look at one of the posters and fill in the details below.

Name.....

They like to cook

Take a left down Hale Top (West) past some of the shops. Turn left again when you see this sign.



Which two of the same animal can you see under the 'Wythenshawe' sign?

.....



Go to the Indoor Markets.

Name three things that you can buy there.

...../...../.....