

Manchester

Platt Fields Park Story Trail



Welcome

This trail is aimed at children aged 2 to 5 and their families and carers.

Follow the map and the story of Uncle Josh, Mia, Kai and Tufty the dog. What can you see and do? Can you tick off each activity?

Remember to stay safe, keep your distance from other families and sanitise your hands. Please do watch out for any bottles or sharp cans that other park users may have left on the grass. We want your little explorers to explore all of the lovely nature. Please do treat our flowers and plants with love and care. When visiting the lake, please supervise your child around the water at all times, and please do not touch the birds.

Tufty



Mia



Uncle Josh



Kai

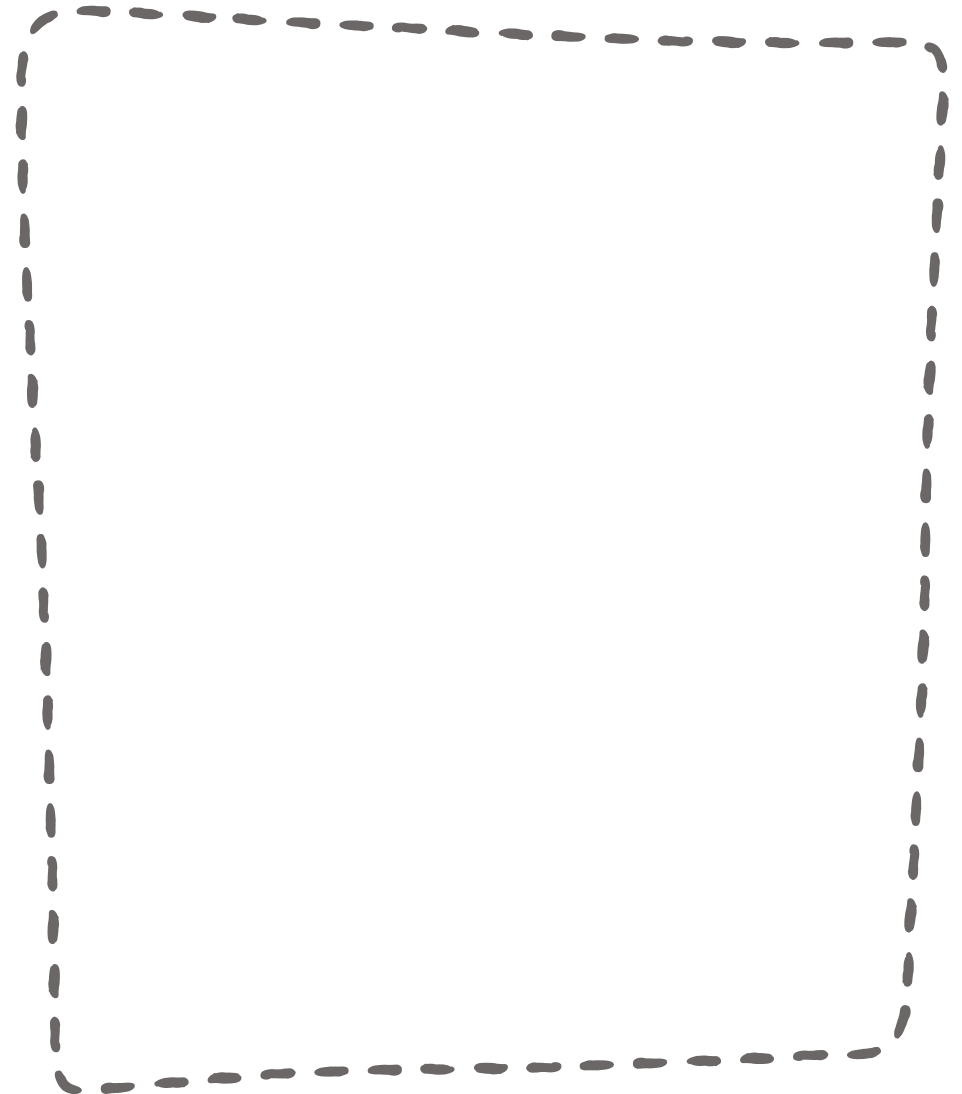


Read the story aloud to your little explorers and have fun chatting and playing along the route.

This walk will take up to **45 mins**, depending on your pace.

Who is doing the story trail with you today?

Draw a picture of yourself and your family or friends in the park. Can you write your names?



Platt
Fields Park
Story trail



1

Orchard

Mia and her little brother, Kai, were taking their Uncle Josh and his dog Tufty out for a walk.

'Trees!'

said Kai, pointing beside the path.

'Big trees and little trees,' agreed Uncle Josh.

Ruff ruff ruff! barked Tufty.

'The little ones are trees for elves,' said Mia.

How many trees can YOU count?

Can you see any elves hiding? Can you find any fruit trees or long, swishy grass?



'Oh right?' said Uncle Josh with a smile.

'Yes,' said Mia.

'Look, some have fruit on them! That's for elf snacks. And elves love playing hide-and-seek in the branches.'

'How many trees can you see?' asked Uncle Josh.

Kai started counting,

'One... two... six... ten...'

Mia giggled and started counting at one again as they walked along the path.

2

Shakespeare garden

'Ooh a maze!' said Mia, and ran in and out between the little hedges.

'This is the Shakespeare garden,'

said Uncle Josh. 'Do you know who that is?'

'Shakespeare is the chief elf!' said Mia. 'This is where the elves go to relax.'

'Bee,' said Kai, pointing out a bug.

'Careful of the flowers,'

said Uncle Josh. Then he made a buzzing noise and chased Kai and Mia around and through the hedges.

Can you buzz like a bee?

Can you spot any other bugs in the park? Can you find any flowers?



3

Cathedral arch

They stopped at a large, grey and brown stone arch.

'A magic portal!' said Mia.

'For the elves?' asked Uncle Josh.

Mia nodded. 'But don't worry, it doesn't send humans anywhere.'

'Phew,' said Uncle Josh.

'Stick!' said Kai, holding up a twig.

'Great idea, Kai,' said Uncle Josh. Tufty yapped and pulled on his lead, so they headed off towards the lake. 'Let's look for sticks for Tufty on our way.'

Can you hear any birds or bugs or elves around the arch?



The hill by the eco garden

4

Can you climb on the logs?

Can you find the circle of elf seats?



They played throwing sticks for Tufty along a pretty grassy path, and got to the bottom of a small hill. Mia and Kai raced up the hill and rolled down it lots of times, laughing.

'Ooh look, a magic elf circle!' said Mia, pointing to a garden by the lake.

She led them to the Eco Garden and a circle of logs. Kai tried to climb onto a log three times but kept falling off. Uncle Josh helped him.

Mia walked around the whole log circle then sat down on one.

'This is where the elves tell stories to each other,' she said.

Uncle Josh sat down as well, then looked left and right before whispering, 'Are there elves here right now?'

'No, no,' said Mia. 'They're back up on the hill. Didn't you see them? They're watching out for humans who are littering. Shakespeare the chief elf absolutely hates litter in the park.'

'Oh no! What happens if he sees people littering?' asked Uncle Josh.

'He... causes mischief!' said Mia and tickled Kai, who nearly fell off the log laughing.



Playground

5

What was your favourite thing you saw in the park today?



Did you see any elves?

'I know where there's another great place to cause mischief,' said Uncle Josh, taking them back to the path.

'Ducks!'

shouted Kai.

'Careful,' said Uncle Josh and gave him a cuddle to keep him away from the water's edge.

'We shouldn't go in the lake to cause mischief,' said Mia, frowning.

'No,' laughed Uncle Josh.

'We could walk around the lake without going in it. But we could also go to the...'

He was interrupted by Mia and Kai shouting, 'Playground!' And they ran off to the swings together.



Well done, you made it to the end of the story trail!

Well done, you made it to the end of the story trail! Can you draw your own map of the park? Or a picture of something you saw today, like an elf or a bird or a flower?



We would love to have your feedback. Please scan this QR code to answer some questions and to be entered into a prize draw.

Author: **Rebecca Lewis-Oakes**

Illustrator: **Aaron Cushley**

Local partner:

Read Manchester

You can find more fun activities to add to your routine at **wordsforlife.org.uk** and **hungrylittleminds.campaign.gov.uk**

You can also join the online conversation using the hashtag **#HLMStoryTrails**



@ReadManchester



@Literacy_Trust



@literacy_trust



National Literacy Trust

National Literacy Trust
68 South Lambeth Road
London, SW8 1RL

The National Literacy Trust is a registered charity no. 1116260 and a company limited by guarantee no. 5836486 registered in England and Wales and a registered charity in Scotland no. SC042944.



Changing life stories



MANCHESTER
CITY COUNCIL

Manchester
Adult
Education