

Early years services across Swindon

SWINDON STORIES



Swindon has a wealth of services for children in the early years and their families. Take a look at our early years literacy pathway to help give your child the best start in life and support their literacy development.

Inspiring change through words

Please note that specialist services are only offered in certain areas or settings on a referral basis depending on the child's need.

Adult Community Learning

Swindon Borough Council's Adult Community Learning service offers a variety of learning opportunities for those 19 and over- these include courses for parents to develop and support their own and child's literacy development. Choose from 'Helping Your Child with English and Maths', 'Storysacks', 'Start to Read' as well as 'English for Speakers of Other Languages' among others.

Courses take place in 2-3 hour sessions weekly, for up to 10 weeks.

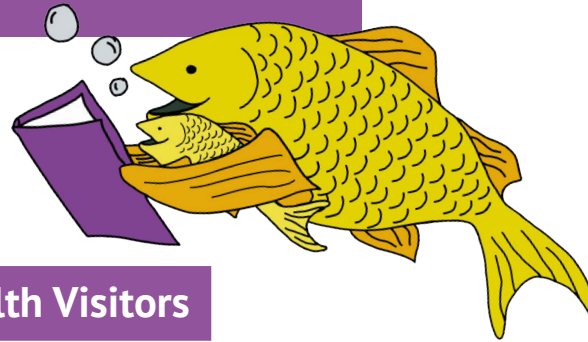
Butterflies Family Centre

Butterflies Family Centre provides support and advice to families with children aged 0 - 5 years throughout the borough. Available activities include:

- Play Together for children aged 0-5 and their families.
- Baby Caterpillars for babies and their families.

Specialist services

- One-to-one parenting and family support.
- Honeybees for children with a diagnosis, or communication and attachment issues.
- Bumps, Baby and Me for expectant parents and families with children up to 12 months.
- Managing behaviour sessions for children under 11 and their families.



Health Visitors

Swindon's team of health visitors work directly with parents and local communities to provide help and guidance on a wide range of health-related issues. Health visitors review children's development at birth, six weeks and age 2.

- Discussing with parents the importance of responding to your baby, talking, singing and reading.
- Bookstart free books, tips and library information for children aged 6-8 weeks and treasure packs for children aged 2.
- Helpful conversations around literacy development, playgroup information and ideas for imaginative play.
- Ages and Stages Questionnaire (ASQ) assessment for all children aged 2 to 2 and a half, which will include specific advice on their language development.
- Library outreach.

Specialist services

- Bookstart packs for families with children with special educational needs.
- Baby massages (criteria apply).
- Interventions around play and interaction based on individual's needs.

Koalas Swindon Opportunity Group

The Saltway Centre offers weekly sessions for children with autism as part of their Koalas Swindon Opportunity Group, covering the activities listed in the Swindon Portage section. A child may be referred to Koalas if they have specific to complex identified needs and they are either receiving multi professional input, or is likely to require it before they start school. This may also include children who have significant medical conditions.

Early years advisory team

Swindon's early years and childcare workforce provide support to practitioners with events and training including:

- Network meetings for early years managers three times a year and six times a year for childminders, focusing on good practice and training.
- Regular training for the early years workforce, focusing on communication and language development and good practice.
- Training for settings and childminders with a focus on communication and language and phonics.
- Online resource bank that includes 'I can' materials.



Speech and Language Therapy

Children who are referred to Speech and Language Therapy Service will receive an assessment of their strengths and needs. This may be through observations, discussion or direct assessment. Advice and support is then given to parents, carers, and others who spend time with the child to help them best support the child's speech, language and communication needs.

Training opportunities are also available for a range of for parents, carers and professionals including Signalong training.

Specialist Services

There are a range of specialist interventions for needs including stammering and hearing impairment, as well as Buddies - a preschool specialist language groups for children with significant language delay called Buddies.

Swindon Portage and Special Tots

Swindon Portage and Special Tots services support preschool children with special educational needs and disabilities (SEND). A child may be referred to Swindon Portage for the home visiting programme and children with specific identified needs can be referred to Special Tots group at the Salt Way Centre. Their activities include:

- Bespoke individualised teaching at home and/or in group session.
- Daily use of Signalong.
- Story and singing time sessions.
- Story sacks available to borrow.
- Activities to promote early matching skills.

Libraries

There are five main libraries in Swindon, offering activities for children in the early years including:

- Weekly story and rhyme times for children aged 0-5.
- Summer Reading Challenge - the UK's biggest reading challenge.
- Bear's Reading Adventure - a picture book reading challenge in which children collect stickers.

Specialist services

- Fun With Stories - a developmental course for children aged 4-5 and their families.

Early Words Together

Our Early Words Together programme, which helps parents support their young child's literacy and language development, is also available in several settings across the town.



For more information and links visit swindonstories.org.uk #SwindonStories