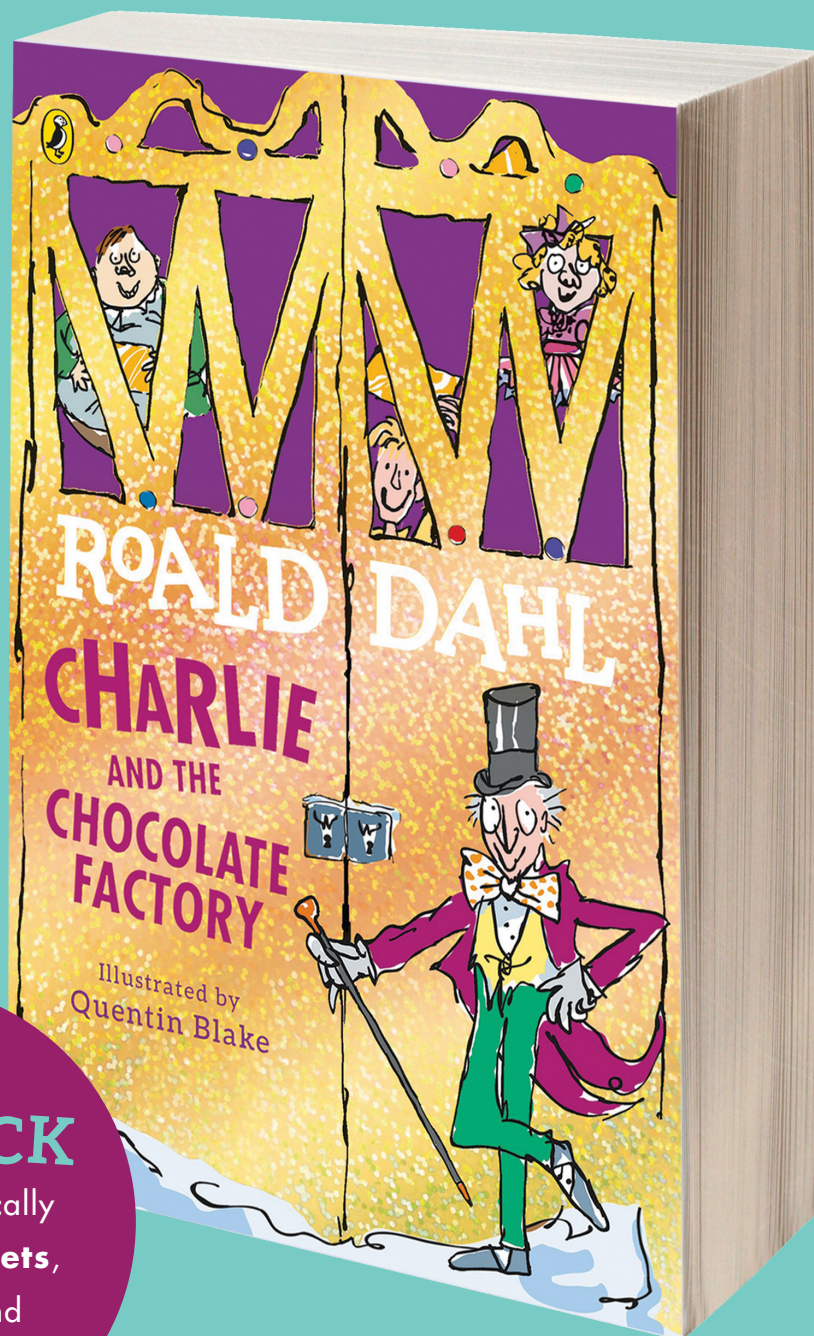


ROALD DAHL

CHARLIE AND THE CHOCOLATE THE FACTORY



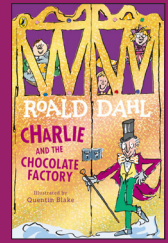
FUN PACK

Including fantastically
fun **activity sheets**,
a book **quiz** and
dress-up ideas!

ROALD DAHL

CHARLIE AND THE CHOCOLATE FACTORY

BOOK QUIZ



1 WHAT DO CHARLIE'S GRANDPARENTS DO ALL DAY IN **CHARLIE AND THE CHOCOLATE FACTORY**?

- a) They eat sweets
- b) They stay in bed
- c) They play cards

6 IN **BILLY AND THE MINPINS**, WHAT IS THE LEADER OF THE MINPINS CALLED?

- a) Don Mini
- b) Don Mono
- c) Don Mani

2 IN **GEORGE'S MARVELLOUS MEDICINE**, WHAT COLOUR IS THE MEDICINE AFTER GEORGE BOILS IT?

- a) Gorgeous gruesome green
- b) Fearsome fiery red
- c) Deep and brilliant blue

7 IN **MATILDA**, WHAT FIRST AMAZES MISS HONEY ABOUT MATILDA?

- a) Her mathematical ability
- b) Her musical ability
- c) Her reading ability

3 IN **MATILDA**, WHICH PUNISHMENT DOES MISS TRUNCHBULL GIVE BRUCE BOGTROTTER?

- a) Puts him in The Chokey
- b) Forces him to eat an enormous cake
- c) Makes him touch a newt

8 WHAT ARE THE NAMES OF THE THREE FARMERS IN **FANTASTIC MR FOX**?

- a) Woggis, Dunce and Lean
- b) Moggis, Munce and Mean
- c) Boggis, Bunce and Bean

4 IN **CHARLIE AND THE CHOCOLATE FACTORY**, WHERE CAN YOU FIND WHANGDOODLES, HORNSWOGGLERS AND SNOZZWANGERS?

- a) In Caterpillar Country
- b) In Loompaland
- c) In Eucalyptus Land

9 IN **GEORGE'S MARVELLOUS MEDICINE**, WHAT HAPPENS TO GRANDMA WHEN SHE DRINKS MARVELLOUS MEDICINE NUMBER FOUR?

- a) She disappears
- b) She blows up
- c) She bursts her boiler

5 WHAT DOES GRANDMA TELL GEORGE TO EAT THREE TIMES A DAY IN **GEORGE'S MARVELLOUS MEDICINE**?

- a) Cauliflower
- b) Cabbage
- c) Curly kale

10 IN **THE GIRAFFE AND THE PELLY AND ME**, WHAT DOES THE WORD 'GRUBBER' MEAN?

- a) It is an old word for a sweet shop
- b) It is a name for someone who is very dirty
- c) It is a name for someone who eats too quickly

ANSWERS
AT THE END
OF THE PACK

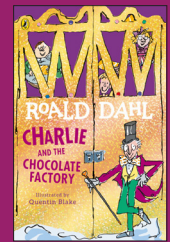
DONCASTER
STORIES



ROALD DAHL

CHARLIE AND THE CHOCOLATE FACTORY

INVENT YOUR OWN SWEET



Time to present your sweet to Mr Wonka! Write a short presentation about your sweet to persuade Willy Wonka to hire you as his new inventor. Use the table below to make some notes first.

NAME OF MY SWEET	
MY SWEET'S PARTICULAR FUNCTION	
REASON PEOPLE WILL BUY MY SWEET	
SOME POWERFUL VERBS AND ADJECTIVES TO DESCRIBE MY SWEET	
A BOLD STATEMENT OR CLAIM ABOUT MY SWEET TO FINISH	

Now write your presentation. Remember, Willy Wonka is very busy so he won't listen for long! Keep your presentation to five sentences or less.

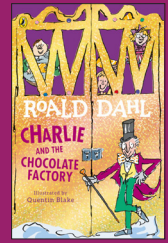
FIND MORE LEARNING RESOURCES AT

WWW.ROALDDAHL.COM/TEACH

ROALD DAHL

CHARLIE AND THE CHOCOLATE FACTORY

INVENTING ROOM



"This is the most important room in the entire factory!" he said. "All my most secret new inventions are cooking and simmering in here!"

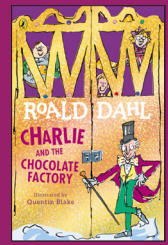
Imagine if you were an extraordinary inventor like Mr Willy Wonka! What would you invent, hot ice-cream for cold days, Hair Toffee or even an Everlasting Gobstopper? Draw a picture and describe your new creation!



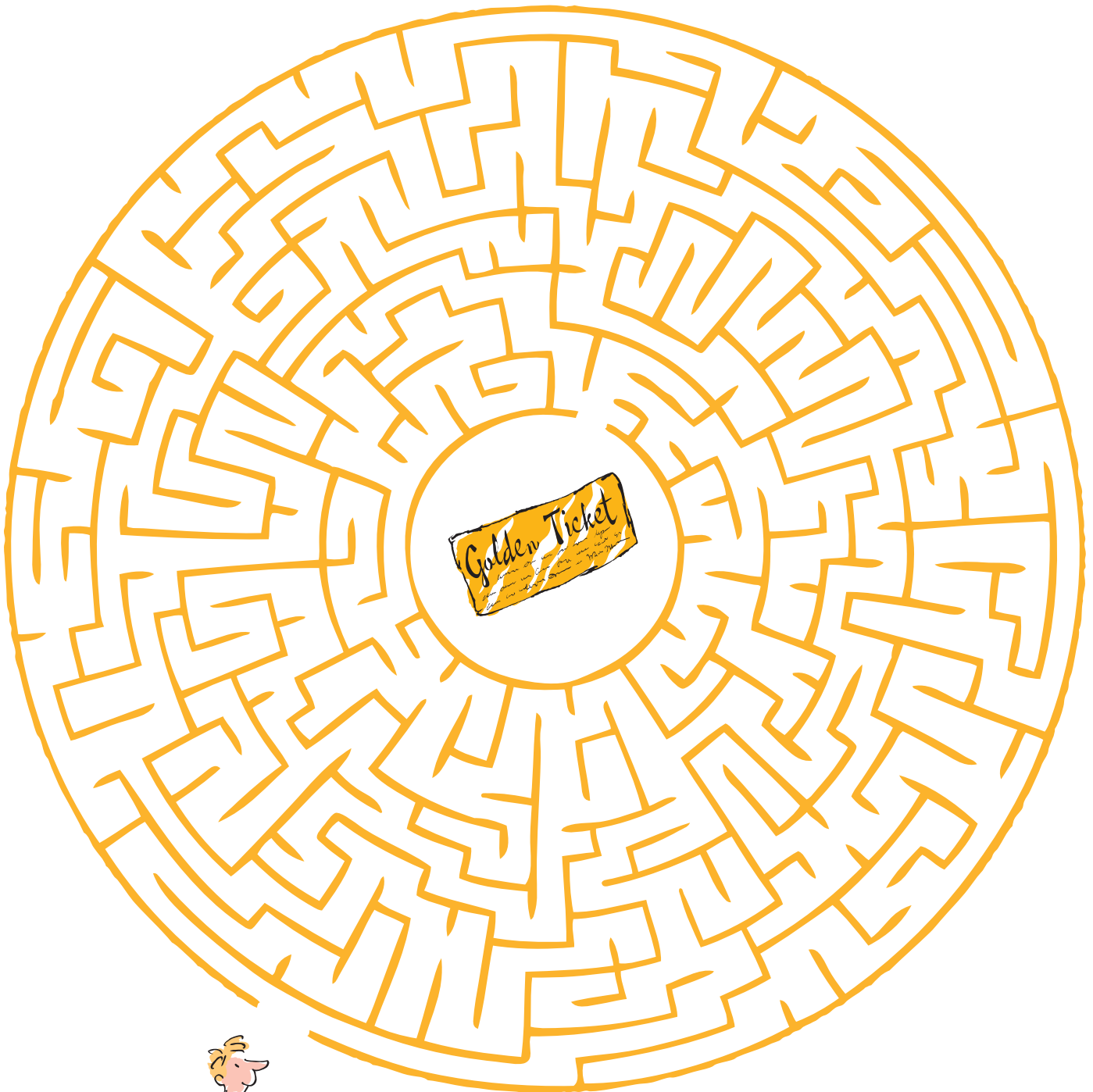
ROALD DAHL

CHARLIE AND THE CHOCOLATE FACTORY

GOLDEN TICKET MAZE



Charlie's lost his Golden Ticket! He needs to get into Willy Wonka's factory so he can feast on scrumdiddlyumptious treats. Help him find his ticket in the maze below.



**DONCASTER
STORIES**

©2020 The Roald Dahl Story Company Ltd /Quentin Blake.

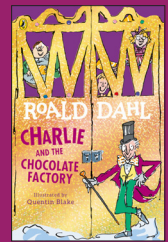


Schools

ROALD DAHL

CHARLIE AND THE CHOCOLATE FACTORY

WILLY WONKA'S PICK 'N' MIX



Which of Willy Wonka's wonderful ingredients isn't in the wordsearch because greedy Augustus Gloop has eaten it all!

CACAO
CHOCOLATE
NUT

CARAMEL
CANDY
TOFFEE

CREAM
SUGAR
BUTTERSCOTCH

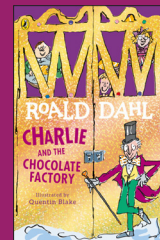
R	A	C	A	C	A	O	L	P	M	Y	R	O	E	Y	K
X	Y	N	Z	G	O	X	P	Y	N	X	N	U	T	B	L
E	A	P	F	V	F	B	X	B	G	G	J	G	O	Q	D
X	F	E	X	M	O	W	C	U	I	C	N	A	D	C	F
Q	W	Z	E	E	S	U	H	T	E	Y	R	H	Z	L	K
P	F	D	W	Q	V	T	R	T	U	A	U	E	Q	I	A
F	S	G	C	A	R	A	M	E	L	I	M	W	A	E	N
G	F	A	S	R	L	T	E	R	O	Q	J	V	P	M	J
B	T	H	B	G	R	S	A	S	B	D	T	P	C	H	X
R	I	O	M	S	I	D	K	C	J	H	O	D	B	J	M
O	H	T	F	S	T	S	R	O	R	B	K	Y	Z	Q	K
G	C	G	L	F	H	Z	N	T	C	U	W	D	C	J	P
I	Y	W	T	A	E	U	S	C	M	L	V	N	L	I	L
H	C	Y	Q	J	K	E	N	H	V	K	S	A	R	Z	N
D	N	M	U	P	U	W	O	I	W	T	X	C	Q	K	J
U	R	A	G	U	S	Z	V	B	V	C	Y	J	D	M	Y

AUGUSTUS GLOOP HAS EATEN ALL THE

ROALD DAHL

CHARLIE AND THE CHOCOLATE FACTORY

QUIZ ANSWERS



1

b) They stay in bed

2

c) Deep and brilliant blue

3

b) Forces him to eat an enormous cake

4

b) In Loompaland

5

b) Cabbage

6

a) Don Mini

7

a) Her mathematical ability

8

c) Boggis, Bunce and Bean

9

a) She disappears

10

a) It is an old word for a sweet shop

