



Souvenir poster and trail map

Little Bees - BIG impact!
7 July - 23 September 2018



The little Bees are presented as part of the Bee in the City public art trail.

Created in Manchester by:



In support of:



Presenting Partners:



Learning Programme Partner:



Little Bees - big buzz!

A hive of busy Bees has landed in Manchester for the biggest public art trail the city region has ever seen. Bee in the City is brought to you by Wild in Art and Manchester City Council along with presenting partners Well Pharmacy and Virgin Trains, sponsors and supporters.

As part of the event, 'colonies' of little Bees, designed by local school children, youth groups and adult creative groups, are on display in venues across the city. The little Bees (all 131 of them!) showcase the ideas and creativity of the city's fledgling artists, for everybody to enjoy.

Bee an adventurer this summer and have fun finding all the Bees!

Bee a fundraising hero!
Help raise funds for Manchester communities.

Bee-tastic challenge:
get sponsored and see how many little Bees you and your friends or family can visit in four hours. Find out more about how to set up a Bee in the City fundraising page at beeinthecitymcr.co.uk/fundraising

Don't forget to take a selfie at each Bee as proof!

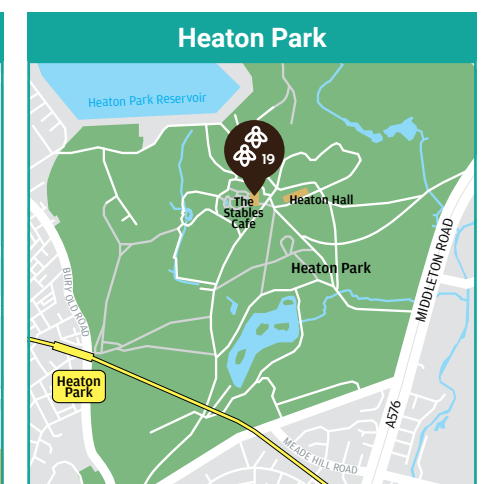
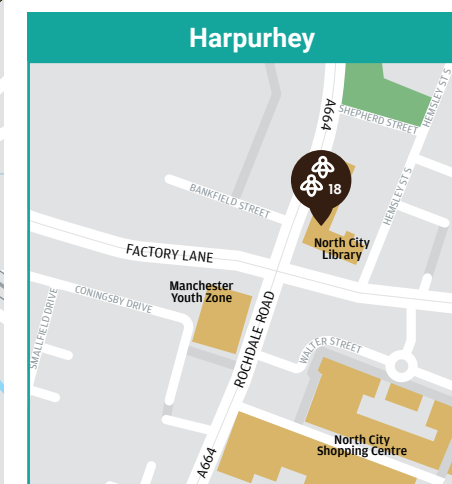
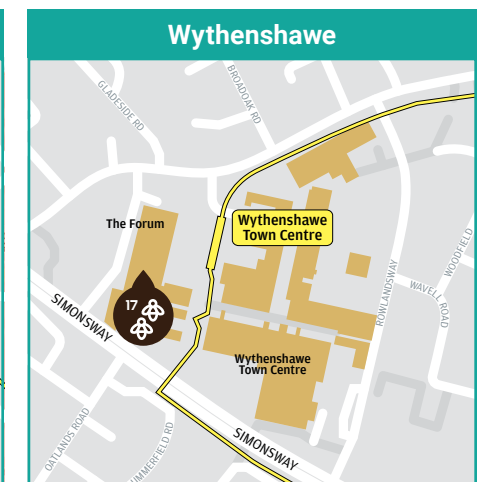
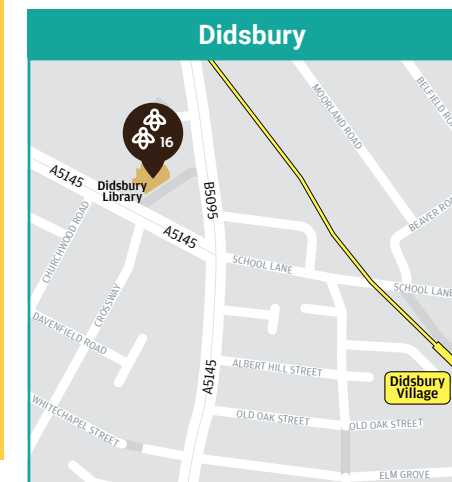
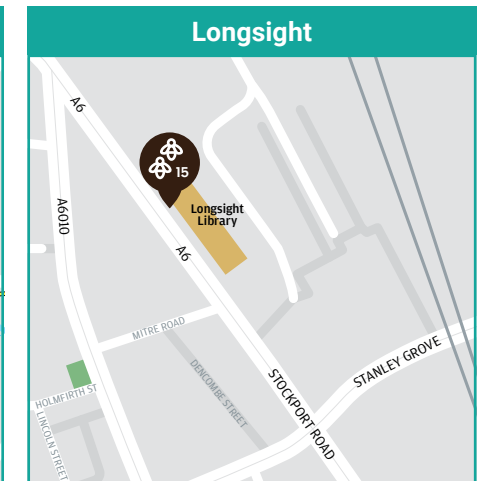
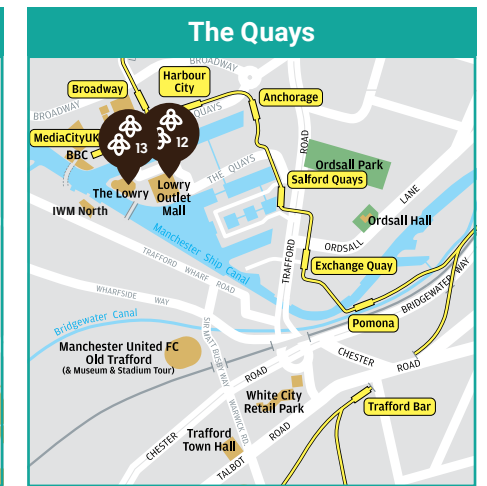
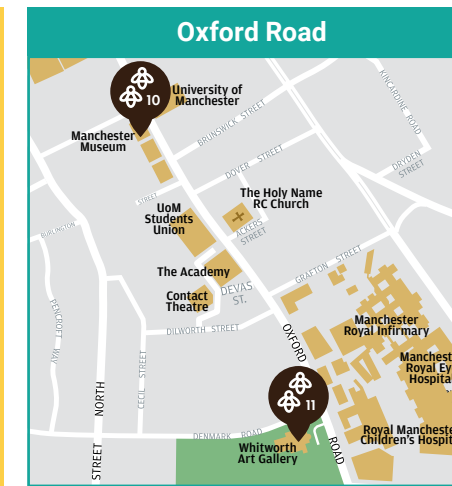
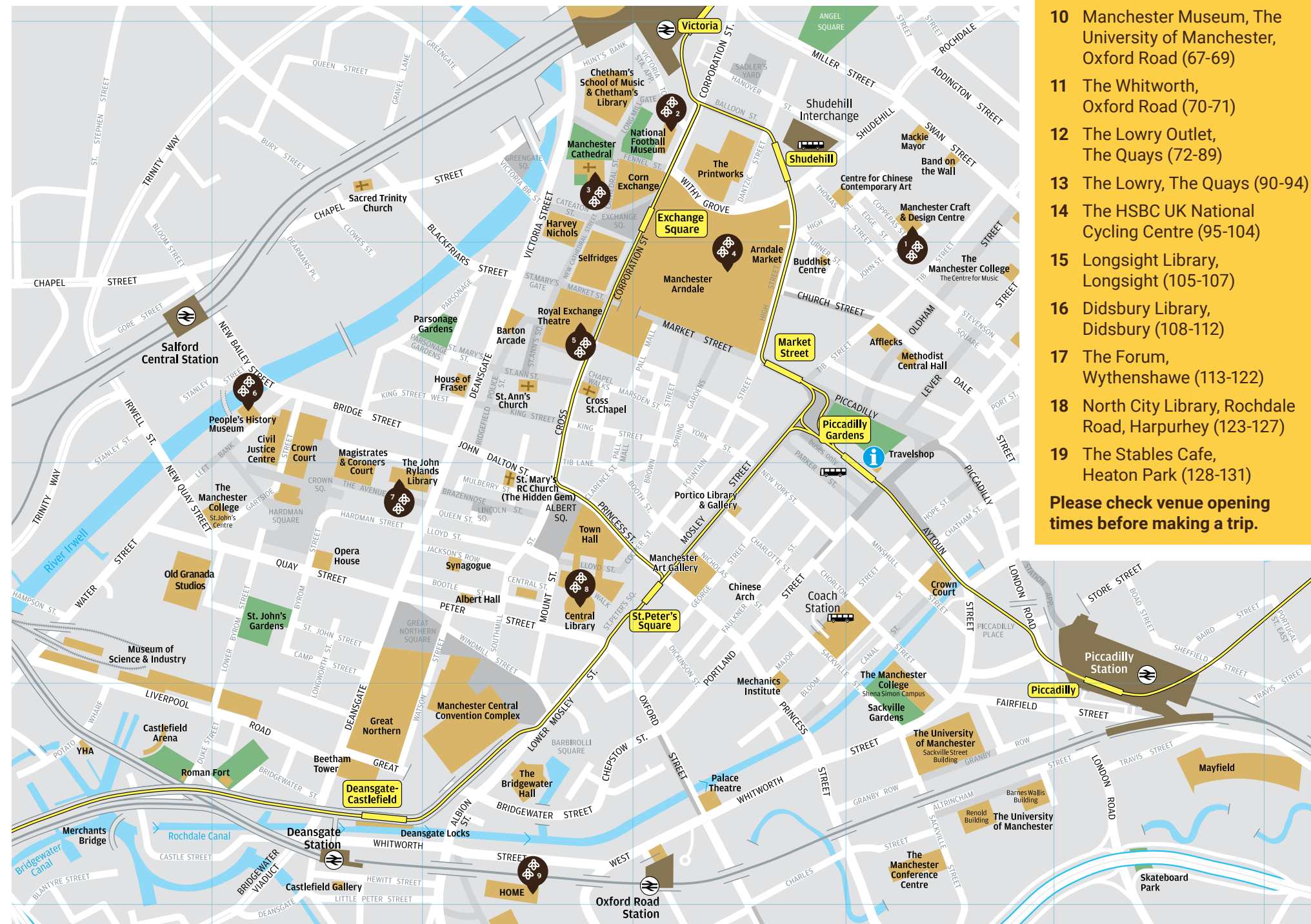
Bee in the City's Learning Programme has seen 121 schools/groups and up to 30,000 children and young people take part. Thanks to each and every one for making such a creative contribution!



Little Bee locations

- 1 Manchester Craft and Design Centre (1-4)
- 2 The National Football Museum (5-9)
- 3 Manchester Cathedral (10-29)
- 4 Manchester Arndale (30-34)
- 5 The Royal Exchange Theatre (35-42)
- 6 The People's History Museum (43-47)
- 7 John Ryland's Library, Deansgate (48-50)
- 8 Central Library (51-64)
- 9 HOME (65-66)
- 10 Manchester Museum, The University of Manchester, Oxford Road (67-69)
- 11 The Whitworth, Oxford Road (70-71)
- 12 The Lowry Outlet, The Quays (72-89)
- 13 The Lowry, The Quays (90-94)
- 14 The HSBC UK National Cycling Centre (95-104)
- 15 Longsight Library, Longsight (105-107)
- 16 Didsbury Library, Didsbury (108-112)
- 17 The Forum, Wythenshawe (113-122)
- 18 North City Library, Rochdale Road, Harpurhey (123-127)
- 19 The Stables Cafe, Heaton Park (128-131)

Please check venue opening times before making a trip.



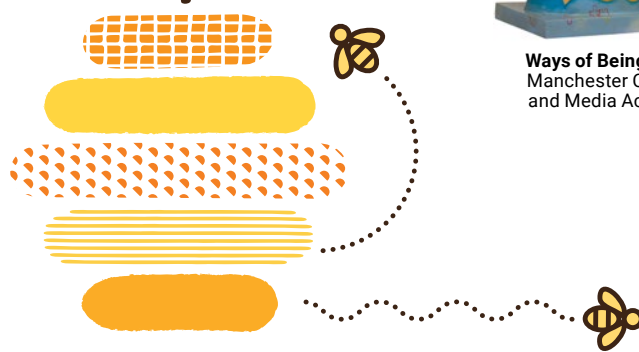
This map is a guide and all Bee locations are correct at the time of print. © Wild in Art 2018. Maps: Marketing Manchester and Instruct Studio. Design: Instruct Studio. Photography: David Oates. Print: Galloways.



Bee in the City

presents

Little Bees



1
Ways of Being Co-op Manchester Creative and Media Academy



2
Voice of Unity St Mary's Primary School



3
Our School St Mary's RC Primary School



4
Patzbee St Patrick's RC Primary School



5
Bee like Broomwood Broomwood Primary School



6
Sir Matt Buzzbee Fairway Primary School



7
Be Proud St George's C of E Primary School



8
Tithe Barn Bee Tithe Barn Primary School



9
We Beelieve in 'The Best in Everyone' William Hulme's Grammar School



10
Randomly Bee 4CT Ladybarn Community Hub



11
Bee Diverse Burnage Academy for Boys



12
Peat Cadishead Primary School



13
Beacon of Light Canon Burrows C of E Primary School



14
Crosssacres AcadeBee Crosssacres Primary Academy



15
Bee the Best Davyhulme Primary School



16
La Catrina, El Ángel de la Ciudad Egerton High School



17
Bee-member: Lest we forget Gorse Hall Primary School



18
Lord Beedan Powell Greater Manchester Scout Counties



19
Proud to Bee Haveley Hey Community School



20
Bee Universal Heald Place Primary School



21
Peace Bee With You Holy Name RC Primary School



22
Bear Town Bee Marfields Primary Academy



23
Bee Mindful, Bee Inspired Primrose Hill Primary School



24
Buzzbee Rolls Crescent Primary School



25
Salford Wannabee St Ambrose Barlow RC High School



26
BEElieve in St Philip's St Philip's Catholic Primary School



27
The Little Superstar Tarleton Community Primary School



28
Bee-yond the Stars The New Broadwalk Pupil Referral Unit



29
The Bee's Knees Webster Primary School



30
Woody the Brentwood Bee Brentwood High School and Community College



31
Bee Unique Grange School



32
Inmate 'B' HM Prison Manchester



33
Live like a Butterfly, work like a Bee Manchester Hospital School



34
Manchester: City of Invention The Manchester Grammar School



35
#BeeMore Alderley Edge School for Girls



36
The Bredbury Bee Arden Primary School



37
Ericc Cheadle Hulme Infant and Junior School



38
Bee Hopeful Milton St John's Primary School



39
InclusivBee Rose Hill Primary School



40
Bee United School's Out Childcare



41
SWS Bee Sir William Stanier School



42
Master of Cerobees The Circus House



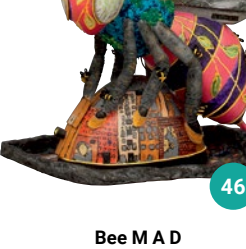
43
Wacky the Waconian Cheadle Hulme School - Senior School



44
The Rights to Bee Our Lady's RC Primary School



45
Beenigma Prospect Vale Primary School



46
Bee M A D (Mad About Denton) Russell Scott Primary School



47
Beelieve The Firs Primary School



48
Bee Yourself 2nd Monton Girl Guides



49
Bee One Old Trafford Community Academy



50
Blossom St Thomas' C of E Primary School



51
Bee Free Central Library



52
Lady Buzzington Inscape House School



53
Let There Bee Love Inscape House School



54
Robot Battle Bee Inscape House School



55
Elizabeth II Manley Park Primary School (Juniors)



56
Diversabee Manley Park Primary School Infant Department



57
Proud to Bee... Martenscroft Nursery School and Children's Centre



58
Blossom Love New Moston Primary School



59
Bee Part of Our Community Oswald Road Primary School



60
Read Manchester BuzzyBee Reader Read Manchester



61
Bee United One City St Margaret Mary's RC Primary School



62
Beelief St Margaret's C of E Primary School



63
Thrive with the Hive St Peter's C of E Primary School



64
What does the Bee mean for Me? St Winifred's RC Primary School



65
Our Community St Mary's RC Primary School



66
Sting Wellacre Academy



67
Purple Crocus Bee Art with a Heart



68
Captured In Print Claremont Primary School



69
Bee-autiful The Divine Mercy RC Primary School



70
Unity Hulme High Street Library



71
North Chadderton School Bee North Chadderton School



72
Emmeline Bee All Hallows RC High School



73
Arthur Boothstown Methodist Primary School



74
H.A.D.I Ellesmere Park High School



75
GEMSzzzzz Bee! Godfrey Ermen Memorial School



76
Bee PRoId Manchester Secondary Pupil Referral Unit



77
Beelieve and Succeed New Park High School



78
Bee the Best Springwood Primary School



79
Unity in Diversity St Andrew's C of E Primary School



80
Beeyonce St Charles RC Primary School



81
Bee United in Peace St Gilbert's Primary School



82
Core Blime-BEE! St Mary's RC Primary School, Swinton



83
St Patrick's Family Bee St Patrick's Cluster



84
Peace Bee St Paul's CE Primary School



85
Beelieve in Magic! St Paul's C of E Primary School, Crompton Street



86
Bee-lieve Stockport Academy



87
Bee Mindful The Canterbury Centre Pupil Health Referral Unit



88
Buzzin' The Clifton Centre



89
Welly Bee-ing Wellington School



90
The Sewing Bee Chorlton C of E Primary School



91
Enviro Bee Chorlton Park Primary School



92
Buzz Selbee Lostock College



93
St John's Bee-attitudes St John's RC Primary School



94
DiversiBee Withington Girls' School



95
The Bee from the East 4CT East Manchester Youth Groups



96
Pride in Gorton All Saints Primary School



97
Buzzworth Beswick Library, East Manchester Academy



98
One Love Forest Park Preparatory School



99
The Beyer/Becker Bee Gorton Local History group



100
HOCS Bee Higher Openshaw Community School



101
Ravensbee Ravensbury Community School



102
Stevie's Bee St Stephen's RC Primary School



103
50 Nations in 1 School Whalley Range 11-18 High School



104
Wright Rob-Bee Wright Robinson College



105
Mel Chapel Street Primary School



106
Manchester is Our Home Plymouth Grove Primary School



107
BEE (Because everyone's equal) St Agnes CE Primary School



108
The Bee-ver Road Bee Beaver Road Primary School



109
It's Good to Bee Me! Broad Oak Primary School



110
Caven-Bee of West Dids-Bee Cavendish Primary School



111
Beatrice Didsbury Storytime



112
The 'Beeliving Beecomg' Bee St James and Emmanuel Academy Trust





Don't miss any of the Bees - track your trail!

101 big Bee sculptures are also part of Bee in the City. Pick up a Trail Map or download the app and buzz off around the city to see them all. With your app you can:

Collect Bees

Unlock rewards

View your trail progress

Add your photos to our gallery and share on social media (#beeinthecity)

Download the app from the App Store or Google Play (£1.99)* - available from 23 July 2018.



Bee there...

Farewell Weekend: 12 - 14 October 2018

HSBC UK National Cycling Centre

Your last chance to see all the big Bee sculptures together, before they are auctioned to raise funds for The Lord Mayor of Manchester's We Love MCR Charity. Take selfies, snapshots and a last lingering look at all your favourites before they take off... Find out more and book tickets at beeinthecitymcr.co.uk/events

Bid for your Bee - Auction: 17 October 2018

Find out more at beeinthecitymcr.co.uk/auction

*From each app purchase, 25% of the net profit is donated to the Lord Mayor of Manchester's Charity Appeal Trust, registered charity number 1066972.

Bee a Reader with Read Manchester

The Bee in the City project provides brilliant opportunities to promote reading for pleasure and support the Read Manchester campaign from Manchester City Council and the National Literacy Trust.

Launched in 2016, Read Manchester raises awareness of the benefits of reading and helps to raise literacy levels. Last summer, schools and community groups decorated 56 BookBenches in partnership with Wild in Art, which were displayed across the city.

As part of Read Manchester, the 'Bee a Reader' initiative will use the buzz of the Bee sculptures to encourage the whole city to spend 10 minutes reading or sharing stories every day. Families can take on the Bee a Reader Challenge, which includes a series of fun reading-themed tasks. Can you complete a Bee a Reader book review, swap a book with a friend or read in an unusual place? Complete all the mini-challenges to claim a free book from your local library.

www.readmanchester.org.uk



Bee a Writer! Check out our writing competition at readmanchester.org.uk

